

1748

Finland is part of the Kingdom of Sweden. Construction of the sea fortress begins, led by Augustin Ehrensvärd. In 1750, Fredrick I of Sweden gives the fortress the name of Sveaborg.

1788

War breaks out between Russia and Sweden, and the fortress operates as a naval base.

1809

The fortress is surrendered to the Russian army and becomes a Russian naval base for the next 110 years. In 1809, Finland is made an autonomous part of the Russian Empire.

1855

The Crimean War. The fortress is badly damaged under Anglo-French naval bombardment.

1918

The Finnish Civil War. A camp for prisoners of war is set up at the fortress. The fortress is annexed by Finland and named Suomenlinna.

1939

At the start of WWII, the fortress serves as a coastal artillery, anti-aircraft and submarine base.

1973

The Finnish garrison leaves the fortress. The management of Suomenlinna is taken over by the Ministry of Education and Culture.

1991

Suomenlinna was inscribed to the UNESCO list of World Heritage Sites as a unique example of the military architecture of its era.

today

Suomenlinna is one of the most popular places to visit in Finland and a vibrant district of Helsinki with a wide range of services and events all year round. In addition to hosting large numbers of visitors, Suomenlinna is also home to 800 permanent residents. The Governing Body of Suomenlinna, a government agency under the Ministry of Education and Culture, is responsible for the restoration, development and maintenance of the fortress as well as managing it as a visitor attraction.

The fortress is conserved and developed in accordance with the principles of sustainable tourism and the aim is to conserve it for future generations. Be sure to follow all instructions during your visit and help us preserve this World Heritage Site.

ENGLISH

SUOMENLINNA
SVEABORG

WELCOME

Suomenlinna was added to the UNESCO list of World Heritage Sites as a unique example of the military architecture of its era. Suomenlinna is a bastion fortress with an irregular shape and a unique history in serving the defence of three realms: Sweden, Russia and Finland.

Services and their opening hours, ferry timetables, events and more information about Suomenlinna:



guide.suomenlinna.fi

Start your visit from the Suomenlinna Visitor Centre and get the best tips to explore the fortress.

The main attractions can be experienced on the Blue Route, which is about 1.5 kilometres. Follow the blue line on the map and the blue signs along the route. The blue dots on the map show the locations of the main attractions and information boards.

SUOMENLINNA CHURCH

8 The church on Suomenlinna was built in 1854 to serve as a Russian Orthodox garrison church. As Finland took control of the island in the 1920s, it was converted into a Lutheran place of worship. A lighthouse, serving both air and sea traffic, still operates in the steeple.



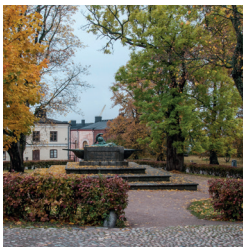
DRY DOCK

24 Suomenlinna's dry dock is one of Europe's oldest operating dry docks. In the 1760s, ships for the Swedish naval fleet were built here, under the supervision of naval architect F. H. af Chapman. Nowadays, the dry dock is used for renovating old sailing boats.



GREAT COURTYARD

29 Designed by the fortress's founder Augustin Ehrensvärd, the Great Courtyard was completed in the 1760s and served as the main square. It was badly damaged in the Crimean War in 1855. Points of interest in the square include Ehrensvärd's tomb.



KUSTAANMIEKKA

42 Kustaanmiekka is home to Suomenlinna's original bastion and a late-19th-century Russian defence line, complete with sand embankments and artillery points. The Kustaanmiekka bastion area provides stunning seascapes all the way to the mainland.



KING'S GATE

44 The monumental King's Gate is the iconic symbol of Suomenlinna. King's Gate was built in 1753–1754 on the site where a ship carrying the fortress's founder, King Adolf Frederick of Sweden, was anchored while he inspected the construction of the fortress in 1752.



BLUE ROUTE (LENGTH APPROX 1,5 KM)
 TUNNEL
 ARTILLERY
 OPEN ALL YEAR
 OPEN SEASONALLY
 INFORMATION BOARD
 ACCESSIBLE TOILET, OPEN ALL YEAR
 TOILET, OPEN ALL YEAR
 TOILET, OPEN SEASONALLY
 WASTE SORTING POINT

SÄRKKÄ

- TRANSPORT
- 1 Ferry (HSL), Main Jetty
 - 19 Waterbus, Artillery Bay quay
 - 43 Waterbus, King's Gate quay
 - 46 Waterbus, Lonna quay
 - 51 Service boat (HSL), service quay

- MUSEUMS
- 15 Toy Museum
 - 16 Military Museum
 - 18 Suomenlinna Museum
 - 28 Customs Museum
 - 30 Ehrensärd Museum
 - 37 Vesikko Submarine

- RESTAURANTS, CAFÉS AND BARS
- 2 Restaurant Suomenlinnan Panimo
 - 2 Viapori Deli & Café
 - 49 Café Silo
 - 6 Bastion Bistro
 - 7 Café Vanille
 - 14 Linna bar
 - 15 Café Samovarbar at Suomenlinna Toy Museum
 - 18 Suomenlinna Centre Café
 - 20 Café Bar Valimo
 - 27 Adlerfelt
 - 38 Café Piper
 - 45 Walhalla Restaurant (closed in 2023)
 - 45 Pizzeria Nikolai
 - 47 Lonna restaurant

- SHOPPING
- 4 Supermarket
 - 15 Suomenlinna Toy Museum shop
 - 18 Suomenlinna Centre shop
 - 26 Tykistölahti summer kiosk
 - 32 Museum Shop
 - 32 Arts and Crafts Summer Shop B34

- THE MAIN ATTRACTIONS
- 3 1918 prisoner-of-war camp memorial
 - 8 Suomenlinna Church
 - 24 Dry dock observation deck
 - 29 Great Courtyard
 - 42 Kustaanmiekka sand banks and artillery
 - 44 King's Gate

LÄNSI-MUSTASAARI

PIKKU MUSTASAARI

TO KAUPPATORI MARKET SQUARE

LONNA

WATERBUS
 WATERBUS

ISO MUSTASAARI

- ART AND CULTURE
- 2 HAA Gallery
 - 33 HIAP Gallery Augusta
 - 34 Pot Viapori Ceramic Studio
 - 35 Glass Studio Hytti
 - 35 Tokuyûan Japanese Tea Room
 - 36 Open air theatre
 - 48 Studio Esa Toivanen
 - 52 MUUTE
 - 53 Textile workshop

- ACCOMMODATION
- 5 Hostel Suomenlinna
 - 49 Villa Silo

- OTHER SERVICES
- Suomenlinna Visitor Centre
 - 11 Suomenlinna Library
 - 21 Levyhalli hall
 - 20 Guest marina
 - 40 Beach
 - 41 Picnic facilities
 - 50 Lonna sauna
 - 54 Cannon Sloop Diana quay

- EVENTS AND CONFERENCE FACILITIES
- HIRED FOR GROUPS
- 9 Pirunkirkko
 - 10 Pajasali & Tynnyrintekijä meeting rooms
 - 12 Upseerikerho
 - 13 Ballast Room
 - 22 Tenaille von Fersen
 - 23 Myllysali hall
 - 25 Piirtämo
 - 39 Gunpowder Magazine

SUSISAARI

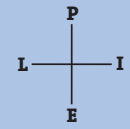
VALLISAARI

KUSTAANMIEKKA

Watch your step for unfenced sudden drops
 Supervise children at all times
 Barbecues and fire are strictly forbidden

READ MORE ABOUT SUSTAINABLE VISITING: www.suomenlinna.fi/en/visitor/instructions/regulations

© CITY SURVEYING SERVICES, HELSINKI 2015 | DESIGN © FAHMO



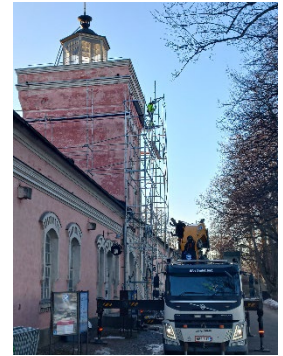
Additional information for Kalkforum 2023 visitors

A brief description of the few interesting renovation projects in Suomenlinna.

Site on map

2 **Rantakasarmi, main jetty barrack's tower.**

Ongoing plaster repair and lime painting work and restauration of metal-framed glass lantern on top of tower.
Look at the sign at the base of the tower for further information.



9 **C28 Kruunulinna Ehrensvärd western wing building**

The joints of the natural stone masonry foundation filled with hydraulic lime mortar: wet lime, hydraulic lime (St. Astier NHL5), quartz filler, sieved sand. Mortar recipe after Thorborg von Konow.

Picture: Brick masonry damage assessment, Santina Ambrosini.



13 **C40 Kruunulinna Ehrensvärd eastern wing building**

The joints of the natural stone masonry foundation filled with hydraulic lime mortar as in western wing building C28.

Southwestern end: Repairs of brick masonry joints on the 3rd floor area The repaired area joints have been colored with pigment and water.



23 **Myllysali Hall**

Unfinished façade restauration. In the previous repair work, lime mortar was used, mixed with brick fragments. This plaster hasn't been sufficiently durable for the prevailing weather conditions, and it will be replaced with hydraulic lime mortar only on the damaged areas.

The upper part of the facade was plastered in the spring of 2023.

